

# TMA Wound Treated with Bovine Dermal Collagen Matrix\*: At-Risk Amputation Wound with Compromised Perfusion and Effects Long-Standing Diabetes Mellitus (DM)

Authors: Mitch Hulbert, DPM<sup>1</sup> and Carol Devlin PhD, RN, MSN, RNFA, CNOR<sup>2</sup>

<sup>1</sup>Foot and Ankle Surgeon, Ascension Columbia St. Mary's, Mequon, WI 53097 and <sup>2</sup>Medical Science Liaison, MIMEDX, Marietta, GA 30062



## Patient 1: Infected diabetic foot ulcer (DFU), Pseudomonas

- Diabetes Mellitus
- EDSD & on dialysis
- Hypercholesterolemia
- Elevated EFTs
- CHF
- CAD
- Pulmonary Valve Disease
- Cataracts Encephalopathy
- Recurrent Pleural Effusion
- Restless Leg Syndrome
- DJD
- Lumbosacral Radiculopathy
- Malnutrition
- Anxiety
- Generalized Myocardial Ischemia
- ESRD on dialysis
- Hypercholesterolemia
- FTs

## Patient 2: DFU, Enterococcus Faecalis

- Uncontrolled Diabetes Mellitus
- Diabetic Foot Infection
- Morbid Obesity
- Hypertension
- Left Hallux Osteomyelitis
- Benign neoplasm, rectum
- Season Allergies
- Neck & Knee Pain
- Former Smoker

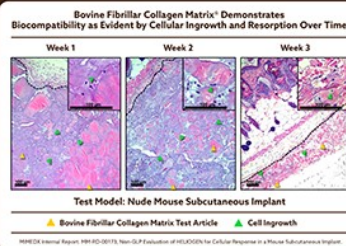
*The South moves north, the North moves south. A star is born, a star burns out. The only thing that stays the same is. Everything changes, everything changes.*

### As Time Marches on for Diabetics<sup>1-5</sup>

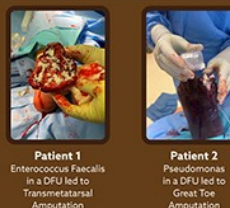


### Why use a Bovine Dermal Collagen Matrix\*

- Contains Type I and Type III collagen
- Provides a collagen matrix known to sequester excess proteases away from the wound bed
- Absorbency allows for management of wound fluids while maintaining a moist environment for optimal healing
- Dry and Hydrated Paste Options
- Controls minor bleeding




### Bovine Dermal Collagen Matrix\* Applied Before Closure Wound



### Bovine Dermal Collagen Matrix\* Consistency Options\*\*


- Changes From Thick to Thin Paste as Saline Solution is Increased.
- Blood from the wound bed is another option to Hydrate the Bovine Dermal Collagen Matrix\*
- Approximate coverage when 2,000 mg bovine fibrillar collagen matrix is hydrated with various amounts of saline.

2,000 mg + 6 mL = 45 sq. cm




Dough Consistency

2,000 mg + 12 mL = 54 sq. cm

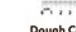


Paste Consistency

2,000 mg + 16 mL = 66 sq. cm



Slurry Consistency



HELIOGEN	Dough	Paste	Slurry
500 mg	1.5 mL	3 mL	4 mL
1,000 mg	3 mL	6 mL	8 mL
2,000 mg	6 mL	12 mL	16 mL

\*\* Bovine Dermal Collagen Matrix was applied dry to the included cases.

Both wounds closed without additional advanced therapy us

### Patient 2: Great Toe Amputation



My doctor told me that patients who have minor or major amputations five year mortality rates are 46.2%, and 56.66%, respectively...

And now I strum along alone...



*Everything changes, everything changes. Now sister calls herself a sexy grandma. Brother's on a diet for high cholesterol. Mama's out of touch with reality. Daddy's in the g beneath the maple tree. As the angels sing an o Hank Williams song. Time marches on, time marches on yeah, time ma*

How QR code for additional information and references

\* Bovine Dermal Collagen Matrix = HELIOGEN, MIMEDX GROUP, INC.

Disclosure: Poster development supported