

# Emergency Department utilization for OUD before and after receiving buprenorphine from EMS



## INTRODUCTION

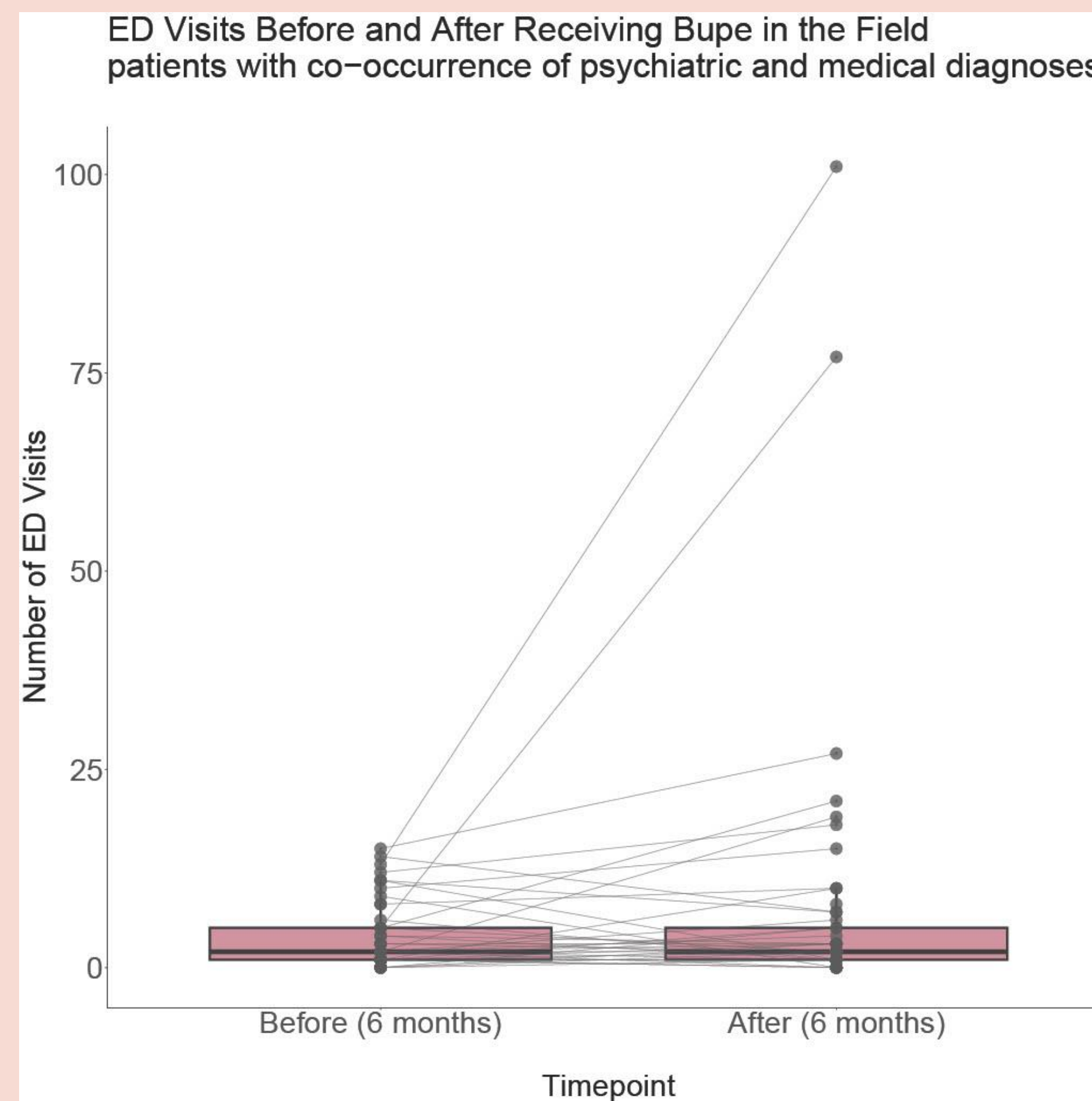
- With only **11% of those with OUD receiving treatment**, there is a crucial need for increasing treatment initiation efforts.
- In 2019, Cooper University Healthcare and its EMS program launched a new treatment pathway to **administer buprenorphine post-overdose to patients in the field**, called Bupe FIRST.
- Initiating buprenorphine treatment in the field would increase the amount of ED visits 6-months post-buprenorphine administration compared to the 6-months prior

## METHODS

- Retrospective chart reviews to examine the number of ED visits 6-months prior and 6-months after the patient received buprenorphine
- A Wilcoxon rank sum tests using R base stats package was used to assess whether participants who received buprenorphine in the field had a change in ED and stratified the differences by whether the patient had key medical or psychiatric conditions, and if they were in MOUD treatment at 30 days.

## RESULTS

Patients with key chronic medical problem and psychiatric diagnoses had an **increase** in the total number of ED visits in the 6 months after the EMS buprenorphine induction compared to the 6 months prior ( $p < 0.05$ ).



When stratified by OUD-related visits and non-OUD-related visits, **only non-OUD-related visits increased in the 6 months after the EMS buprenorphine induction** ( $p < 0.05$ ).

## CONCLUSION

- The implementation of EMS-administered buprenorphine as part of a broader OUD treatment pathway demonstrates promise in improving patient engagement with healthcare systems.
- **This is especially important because refusals to transport by EMS to the ED post-overdose are increasing.**
- These findings underscore the importance of continued efforts to integrate EMS-based interventions with comprehensive care models, addressing both immediate needs and broader healthcare utilization patterns among individuals with OUD.

## AUTHORS & DISCLOSURES

Heil, Jessica<sup>1,A</sup>, Jones, Rylie<sup>1,A</sup>, Salzman, Matthew<sup>1,A</sup>, Haroz, Rachel<sup>1,A</sup>, Tan, Marissa<sup>1,A</sup>, Carroll, Gerard<sup>1,A</sup>  
1. Cooper University Healthcare  
A. Nothing to disclose

## REFERENCES

1. Dowell D. Treatment for Opioid Use Disorder: Population Estimates — United States, 2022. *MMWR Morbidity and Mortality Weekly Report*. 2024;73(73). doi:https://doi.org/10.15585/mmwr.mm7325a1
2. Carroll G, Solomon KT, Heil J, Saloner B, Stuart EA, Patel EY, Greifer N, Salzman M, Murphy E, Baston K, Haroz R. Impact of Administering Buprenorphine to Overdose Survivors Using Emergency Medical Services. *Ann Emerg Med*. 2023 Feb;81(2):165-175. doi: 10.1016/j.annemergmed.2022.07.006. Epub 2022 Oct 1. PMID: 36192278.